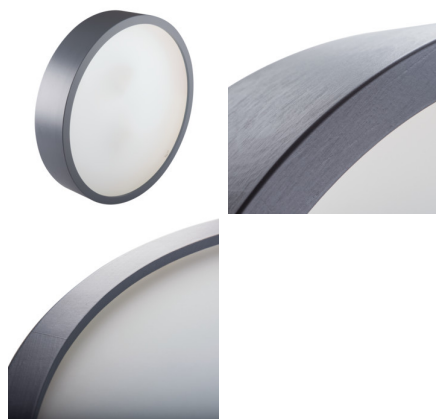


29200 JASMIN 370-A

Ceiling light fitting

5905339292001



The original and at the same time stylish round holders - Kanlux JASMIN are characterized by modern and attractive design. The casing of the ceiling light fixture is made of wood and etched (satin) glass which ensures even dispersal of light. The classic combination of wood and glass makes it a very universal lighting solution.

PRODUCT PARAMETERS:

Colour: anthracite

Place of assembly: wall mounted, ceiling mounted

Place of application: Indoors

Minimum distance from the illuminated object: 0,5m

Possibility of installation on a normally flammable surface: no

The product is not suitable to be installed on a normally flammable surface: yes

The product is not suitable to be covered with a heat-insulating material: yes

Light source included: no

Height [mm]: 77

Diameter [mm]: 375

Rated voltage [V]: 220-240 AC

Rated frequency [Hz]: 50

Maximum power [W]: 2 x max 20

Class of protection against electric shock: I

Lampshade material: glass

Light source: LED

Cap: E27

Ambient temperature range to which the product can be exposed: 5÷25

Enclosure material: Wood

Connection type: Self-clamping block

Range of sections of wires used [mm²]: 1÷2,5

IP class: 20

LOGISTIC DATA:

Packaging method: 1

Number of units in the secondary packaging: 1

Number of units in the packaging: 1

Net unit weight [g]: 1925

Grammage [g]: 2210

Length of a unit pack [cm]: 40

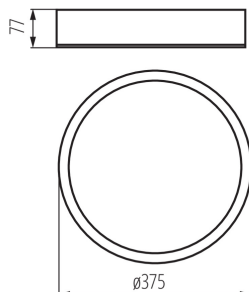
Width of a unit pack [cm]: 40

Height of a unit pack [cm]: 10.5

Weight of a cardboard box [kg]: 2.21

29200 JASMIN 370-A

Ceiling light fitting



Width of a cardboard box [cm]: 40

Height of a cardboard box [cm]: 10.5

Length of a cardboard box [cm] : 40

Volume of a cardboard box [m³]: 0.0168

