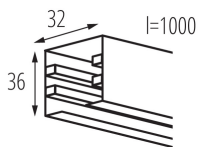


## 33231 TEAR N TR 1M-B

Accessory for electrical supply track systems



### GENERAL DATA:

**Colour:** black

**Place of assembly:** rail TEAR

**Place of application:** Indoors

**Length [mm]:** 1000

### TECHNICAL DATA:

**Rated voltage [V]:** 220-240 AC

**Rated current [A]:** 16

**Rated frequency [Hz]:** 50

**Class of protection against electric shock:** I

**Ambient temperature range to which the product can be exposed:** 5÷25

**Enclosure material:** aluminum alloy

**Maximum permitted load [kg]:** 10

**IP class:** 20

### ADDITIONAL INFORMATION:

- 3-circuit track designed to be used for the installation of spot light fittings.
- Any combination of connected tracks can be powered with the power supply from only one power connector and only one point.

### ACCESSORIES:

**33230** TEAR N TR 1M-W



Track system component, TEAR N TR 1M-W, 3-circuit track, white, (33230)

**33231** TEAR N TR 1M-B

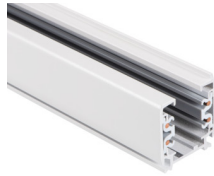


Track system component, TEAR N TR 1M-B, 3-circuit track, black, (33231)

## 33231 TEAR N TR 1M-B

### Accessory for electrical supply track systems

**33232** TEAR N TR 2M-W



Track system component, TEAR N TR 2M-W, 3-circuit track, white, (33232)

**33233** TEAR N TR 2M-B



Track system component, TEAR N TR 2M-B, 3-circuit track, black, (33233)

**33234** TEAR N PCON R-W



Track system component, TEAR N PCON R-W, power connector with plug R , white, (33234)

**33235** TEAR N PCON R-B



Track system component, TEAR N PCON R-B, power connector with plug R , black, (33235)

**33260** TEAR N PCON L-W



Track system component, TEAR N PCON L-W, power connector with plug L, white, (33260)

**33261** TEAR N PCON L-B



Track system component, TEAR N PCON L-B, power connector with plug L, black, (33261)

## 33231 TEAR N TR 1M-B

### Accessory for electrical supply track systems

<b>33236</b>	TEAR N EPLUG W	Track system component, TEAR N EPLUG W, end plug, white, (33236)
		
<b>33237</b>	TEAR N EPLUG B	Track system component, TEAR N EPLUG B, end cap, black, (33237)
		
<b>33238</b>	TEAR N ICON-I W	Track system component, TEAR N ICON-I W, straight connector type "I" internal with plugs L, R, white, (33238)
		
<b>33239</b>	TEAR N ICON-I B	Track system component, TEAR N ICON-I B, straight connector type "I" internal with plugs L, R, black, (33239)
		
<b>33240</b>	TEAR N CON-I W	Track system component, TEAR N CON-I W, straight connector type "I" with plugs L, R, white, (33240)
		
<b>33241</b>	TEAR N CON-I B	Track system component, TEAR N CON-I B, straight connector type "I" with plugs L, R, black, (33241)
		

## 33231 TEAR N TR 1M-B

### Accessory for electrical supply track systems

<b>33252</b>	TEAR N CON-I FLEX W	Track system component, TEAR N CON-I FLEX W, flexible connector with plugs L, R, white, (33252)
		
<b>33253</b>	TEAR N CON-I FLEX B	Track system component, TEAR N CON-I FLEX B, flexible connector with plugs L, R, black, (33253)
		
<b>33242</b>	TEAR N CON-L RL-W	Track system component, TEAR N CON-L RL-W, corner connector type "L" with plugs R, L, white, (33242)
		
<b>33243</b>	TEAR N CON-L RL-B	Track system component, TEAR N CON-L RL-B, corner connector type "L" with plugs R, L, black, (33243)
		
<b>33244</b>	TEAR N CON-L LR-W	Track system component, TEAR N CON-L LR-W, corner connector type "L" with plugs L, R, white, (33244)
		
<b>33245</b>	TEAR N CON-L LR-B	Track system component, TEAR N CON-L LR-B, corner connector type "L" with plugs L, R, black, (33245)
		

## 33231 TEAR N TR 1M-B

### Accessory for electrical supply track systems

**33246** TEAR N CON-X W



Track system component, TEAR N CON-X W, cross connector with plugs L, L, R, R, white, (33246)

**33247** TEAR N CON-X B



Track system component, TEAR N CON-X B, cross connector with plugs L, L, R, R, black, (33247)

**33248** TEAR N CON-T RRL-W



Track system component, TEAR N CON-T RRL-W, connector type "T" with plugs R, R, L, white, (33248)

**33249** TEAR N CON-T RRL-B



Track system component, TEAR N CON-T RRL-B, connector type "T" with plugs R, R, L, black, (33249)

**33250** TEAR N CON-T RLL-W



Track system component, TEAR N CON-T RLL-W, connector type "T" with plugs R, L, L, white, (33250)

**33251** TEAR N CON-T RLL-B



Track system component, TEAR N CON-T RLL-B, connector type "T" with plugs R, L, L, black, (33251)

## 33231 TEAR N TR 1M-B

### Accessory for electrical supply track systems

<b>33262</b>	TEAR N CON-T LRR-W	Track system component, TEAR N CON-T LRR-W, connector type "T" with plugs L, R, R, white , (33262)
		
<b>33263</b>	TEAR N CON-T LRR-B	Track system component, TEAR N CON-T LRR-B, connector type "T" with plugs L, R, R, black, (33263)
		
<b>33264</b>	TEAR N CON-T LLR-W	Track system component, TEAR N CON-T LLR-W, connector type "T" with plugs L, L, R , white , (33264)
		
<b>33265</b>	TEAR N CON-T LLR-B	Track system component, TEAR N CON-T LLR-B, connector type "T" with plugs L, L, R , black, (33265)
		
<b>33256</b>	TEAR N SKIT W	Track system component, TEAR N SKIT W, suspension with self-regulation and cord 2m, white, (33256)
		
<b>33257</b>	TEAR N SKIT B	Track system component, TEAR N SKIT B, suspension with self-regulation and cord 2m, black, (33257)
		

## 33231 TEAR N TR 1M-B

---

Accessory for electrical supply track systems

**33254** TEAR N SCLAMP W



Track system component, TEAR N SCLAMP W, mounting/stiffening suspension clamp, white , (33254)

**33255** TEAR N SCLAMP B



Track system component, TEAR N SCLAMP B, mounting/stiffening suspension clamp, black, (33255)